

ХІПСК
БОРСК

CHRISTMAS COLLECTION 2012



World famous Czech architect and designer Bořek Šípek, (b. 1949) is a visionary cutting edge artist, who always seeks to showcase glassware as a world of unlimited dimensions, functions and artistic beauty. His glassware is bought and sold all over the world as both functional art and pure art. His creations, include decorative candlesticks, party plates (servers), incense holders and drinkware such as delicate champagne toasting flutes with rose motif, or elegant wine glasses. Furthermore, Bořek Šípek creations extend to high value items such as limited editions of purely decorative art, vases and bowls that are created as a visual feast providing the viewer with the majesty and whimsy of glass as a raw material that can momentarily capture light or reflect light thereby hinting at the timelessness and yet fragility of the critical mass of glass.

As early as 1968, as a protege of his famous mentor, glass artistic visionary Rene Roubíček, young Bořek Šípek was also encouraged to further develop his creative vision by gaining yet more professional technical expertise and experience. And so following university studies in architecture in Germany and subsequently working in the Netherlands as a licensed architect, Šípek began his first creative outputs as a professional by designing buildings and interiors. And yet, even then, throughout the 1960s, Šípek still had a passion for glass and dedicated time to grow as an artist using glass: and so he evolved as a serious designer of glass art, producing 3-dimensional art works as new worlds "sculptured" entirely in glass.

Throughout the next few decades following on from the 1970s, as Šípek grew as an artist and designer, architect and unique creative visionary, influential people throughout the art world began to take note. The prestigious Italian design company, Driade was one of the initial art-houses to utilize Šípek's unique vision and creative focus. Proposals and bids began to include Šípek more and more as a creative collaborator. Bořek Šípek creations and collaborations included projects such as: Sèvres dinner sets, the Museum of Modern Art in Den Bosch in the Netherlands, the Opera House in Kyoto, Japan, while he also helped realize the Ginza store in Tokyo. And furthermore, Bořek Šípek has become associated with the image of the famous Parisian Lagerfeld's boutique for whom, he created the Bible of boutiques. Global art houses associated with Šípek creations also include Interior Designer, Vitra Editions Steltman and Franz Wittmann Möbelwerkstätten. Bořek Šípek has received several prestigious awards including the German Award for Architecture (1983), the title of Knight of Arts and Literature of the French Republic (1991), and in 1993 the Award of Prince Bernhard for Applied Arts and Architecture. In the 1980s Šípek became - in the spirit of his original glass maker profession - a co-founder of the now famous Czech glass company Ajeto with workshops in Nový Bor and Lindava, North Bohemia. Simultaneously, awarded the role of Chief architect of Prague Castle, he began to oversee on-site works carried out on castle hill. In this capacity, he became the only architect since Josip Plecnik legally sanctioned by the state to further develop the architectural and visual appearance of the castle interiors. And to accentuate and compliment these Prague Castle developments, unique Bořek Šípek Castle-Wares (furniture, fixtures, interiors & accessories) were conceived, created and produced. Dinner-sets, tables, chairs, unique chandeliers, lighting fixtures, vases, completely newly designed tableware: wine & champagne glasses and flutes, were all created as unique components to "live and breathe" - i.e., be utilized - throughout Prague Castle. Culminating his creative and architectural design outputs exclusively for Prague Castle, Šípek has produced glass-art-ware as gifts for representatives and heads-of-state visiting Prague Castle during President Vaclav Havel's era.

And it is not just politicians and royal heads of state that enjoy Šípek creations; Bořek Šípek graces the homes of the rich and famous throughout the world. World famous personalities who own or have owned Šípek art including the likes of: Mick Jagger, Bob Dylan, Karl Lagerfeld, Jean Paul Gaultier and Vaclav Havel. While in his native country, the Czech Republic, Marta Kubišová, Jan Tříska, Michael Kocáb, Halina Pawlovská, and artist Jan Saudek, are among the many who own Bořek Šípek creations.

In his work as an artist that uses glass as his core material, Bořek Šípek has always been keen to build on the historical tradition and legacy of Czech glass manufacturing and artistry which goes back



BOŘEK ŠÍPEK

hundreds of years. Still fascinated by traditional Czech glass-blowing techniques, as he first was as a teenager, Šípek has constantly sought to promote Czech glassworks throughout the world during his sojourns abroad as an architect, artist and designer. And it has been, in this his personal capacity to be an enthusiastic visionary and generous promoter of Czech artistic design excellence in the field of glassware that Šípek has spearheaded the influence of Czech glass production in the field of glassware throughout the world. For Bořek Šípek approaches glass, the art of glass and glass production and manufacturing as a craft and lively hood in North Bohemia (where his glassworks is based) with a reverence and a humility that seeks to showcase what Czech artists and craftsmen and women have thus far achieved and can achieve as a world renowned industry with depth of experience and skills that are competitive on the world stage, populated by renowned designers, glass-blowers and artists dedicated and passionate about glass and the production of high-end quality works.

Glassworks Projects conceived and created by Bořek Šípek include: the architectural exhibition pavilion Skoda

in Wolfsburg, Germany for the World Exposition EXPO 2000, which was completely designed by Šípek, for which his glassworks in Lindava (North Bohemia, CR) manufactured the exclusively large lamps and glass interior parts, and other three-dimensional installations, for this event. Additional projects of great distinction include, the VIP "Crystal Lounge" of the Ruzyně airport (Vaclav Havel Airport Prague), Czech Republic. While during the period of 2000-2001 the Cunard ocean liners, Carnival Pride and Carnival Spirit were outfitted with hundreds of glass objects-d'art and tableware. And for the renovated Opera House in central Belgrade, Šípek created its unique chandelier, 15 meters in height, with a width of some 3.5 meters constructed entirely of over 450 interlinking glass parts. In 2004, German china brand Rosenthal approached Šípek, with an offer to conceive and collaborate on ideas for exclusive Rosenthal themed collections. Subsequently, theme-based collections of Rosengarden 2004 were introduced, immediately becoming best-sellers giving birth to yet more Bořek Šípek conceptions & collaborations. A limited collection of porcelain wall lights called "Fragile" was also introduced by Šípek in Prague at Designblok 2008.

Uniquely one-off limited editions and activities: For several years now, Šípek he has also been designing awards for Czech Television. For example, he designed the price for the most competitive program with a focus on history - "The Crown of King Charles" and the Thálie Prize, awarded by the Association of Performing Arts in the Czech Republic to artists for their outstanding dramatic performances. For the educational sector during the 1990s, Šípek gave lectures in architecture at the University of Applied Arts in Prague, followed by a brief tenure as visiting lecturer at the University of Applied Arts in Vienna. And more recently, Bořek Šípek acted as Dean of Faculty, Architecture, at the Technical University in Liberec, where he founded an entirely new study program, "Environmental Design".

Promoting Art and Culture at home & abroad: In 2008 Bořek Šípek led the first exhibition of Czech artists in Beijing, China, while in Shanghai, he received a significant honor - he was allowed to build his own gallery using his own blueprints (Bořek Šípek architectural designs) for installing his "Bořek Šípek best collections" exhibit. Such opportunities reveal the extent to which Bořek Šípek has become admired throughout the world, as an artist and designer in his own right, at home and abroad. And as a tireless promoter of the potential and opportunity that glass as a material provides the artist whatever the culture or wherever the installation or exhibit happens to be. Šípek's design work, admired for its extravagant shapes and playful colors, is also represented in prominent museums around the globe - in Düsseldorf, London, Paris, Amsterdam, New York, and of course in Prague, the capital city of his homeland. One of the latest major projects has been designing a memorial of slaves "dragged away from Africa", called a Memorial de Gorée, which he designed along with Martin Gudev for Senegal. And at the beginning of this year (2011/12), Bořek Šípek opened his own glassworks in Nový Bor, named "Studio Anežka" (Agnes Studio).

It can be said, if anything can be said to encapsulate Bořek Šípek the artist, the visionary, the designer, that Bořek Šípek likes to exist without limits!

MICHAEL

Šípek Christmas



*Michael: A six winged
intimacy for the season:
light three candles and evoke
seasonal: Love! Peace! & Joy!
This delicate three branched
candlestick seeks to gather
friends and intimate loved ones
around its flames thereby creat-
ing a scene of love, of sharing
and ultimately of laughter!*

Candle holder from pure crystal glass
height 41 cm, diam. 33 cm; weight 1.9 kg
Signed by Bořek Šípek

GABRIEL

Šípek Christmas

*G*abriel: Enjoy the spirit of feeling at home wherever you are this Christmas with this whimsical "community of candles" that speaks of seasonal blessings: happiness and merriment for the present and an abiding hope for the future!

Candle holder with vase from pure crystal glass
height 35 cm, diam. 37 cm; weight 2.4 kg
Signed by Bořek Šípek

RAFAEL

Šípek Christmas



*R*afael: a concoction of nature and fantasy: a magical Christmas vine that grows wings and candleholders for lighting your way around your seasonal celebrations of fun and light heartedness!

Candle holder from pure crystal glass with coloured ornaments
height 34 cm, diam. 37 cm; weight 2.6 kg
Signed by Bořek Šípek

URIEL

Šípek Christmas



*In the new light all old
Issues will appear
in a new way. If you illumi-
nate your minor sins you
will see them with a fresh
and kind feeling.*

Chandelier with 10 candle holders from pure crystal glass with coloured ornaments
height 50 cm, diam. 50 cm; weight 9.5 kg
Signed by Bořek Šípek

ANGELOS

Šípek Christmas

When the table has been cleared, all delicious meals have been tasted and all warm wishes have been exchanged it is time to sit down, light up a tea candle and reflections of the flames in crystal will dispel your disturbing thoughts.



Candle holder from pure crystal glass
height 7 cm, length 12 cm, width 9 cm
Signed by Bořek Šípek

NATHANIEL

Šípek Christmas

*C*hristmas is the season of giving – give someone the pleasure of nourishment with this candlelit server decorated with the traditional colours of Christmas. Impending flavours are about to be encountered and enjoyed without reservation!



Advent wreath from pure crystal glass with green and red crystal candle holders
height 9 cm, diam. 29 cm; weight 2.6 kg
Signed by Bořek Šípek

TAFEL

Šípek Christmas

*A server to awaken your taste
for the sweet things to
come: surprises that linger
on the tongue!*

*A practical server that decorates
your table proudly, empty or full:
providing, sensual tastes that
come in small but repeated pack-
ages of those much expected and
hoped for seasonal ingredients!*

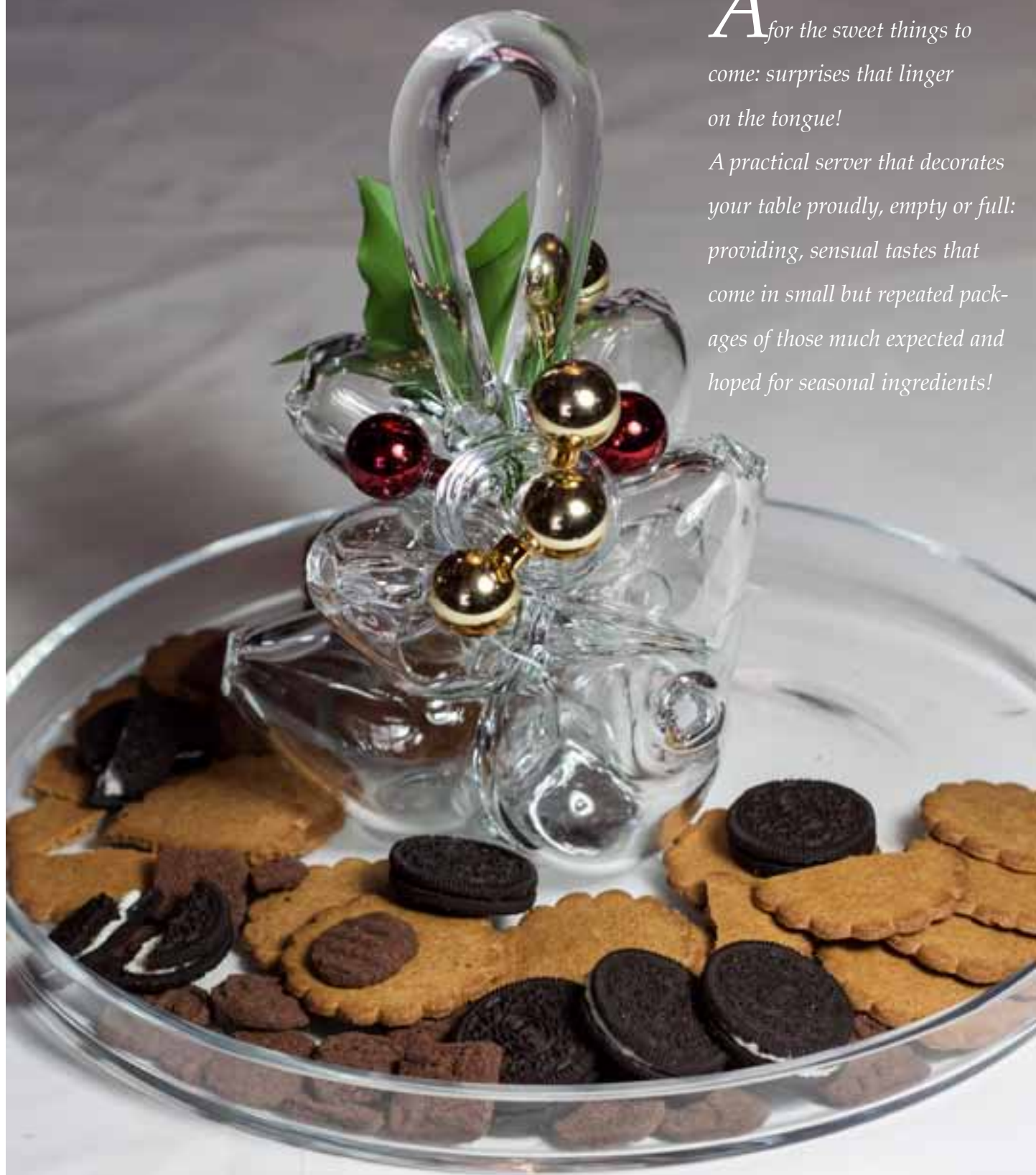


Plate from pure crystal glass
height 26 cm, diam. 37 cm; weight 3.4 kg
Signed by Bořek Šípek

RACHEL

Šípek Christmas

A rose is a flower and not any flower, but RACHEL enables you to pick any seasonal flower you like and arrange within its stem vase colours to suit your occasion. To enhance your statement, eats can be placed at the base or spices that evoke your seasonal program of fun, intimacy and visual delight!

With the glass designed as frosted in part as if the flower you place here is a flame melting the very shapes of this vase, you can further excite the senses and themes around your party table!



Bowl and vase from pure crystal glass with white crystal ornaments
bowl: height 14 cm, diam. 24 cm, vase: height 24 cm, diam. 5 cm; weight 2.2 kg
Signed by Bořek Šípek

ELIZABETH


Šípek Christmas

The simplicity of holding dear something of special interest lies within the message of its clarity: "I'm here, I'm pretty and I'm pretty tasty too – if you try out what's placed here as a seasonal gift for you!"

Elizabeth: a decorative yet transparent holder of little "tasties" to come!



Bowl from pure crystal glass
height 14 cm, diam. 25 cm; weight 4.6 kg
Signed by Bořek Šípek



***N**ew year is
going to come
into your
lives, still shy and timid.
Nobody knows what it
grows up.
Give him courage and
toast his health - whether
it is playful, full of joy
and just crystal clear.*

ARKHOM

Šípek Christmas

*A promise kept – to arrive
for seasonal celebrations
on time - deserves celebrating
with champagne flutes pinched
& twisted in the middle as a
reminder of the practical side of
seasonal celebrations: happy times
and good eats and drinks abound
all around!*

*Arkhom: a happy heart feels like
you are floating upwards just
like tiny bubbles rising
in a champagne flute!*

Sparkling wine glass from pure crystal glass
height 30 cm, diam. 7.5 cm
Signed by Bořek Šípek

RUŽE

Šípek Christmas

Christmas has its romantic side too! With champagne flutes held down at the base with precious rose buds of coloured glass, as if frozen in time – capturing the inner emotions of the scene: a white Christmas, a sleigh ride, bells chiming and presents growing around the tree!

When the once lingering drink has gone all too soon, and you need a breather – turn the flute upside-down and make a decorative statement of love and intent!

The more you have, the more you'll want to enjoy of this champagne flute named RUZE – it is elegant, practical and romantically seasonal, all at the same time!

Wine glass from pure crystal glass with coloured glass flower foot
height 29 cm, diam. 8 cm
Signed by Bořek Šípek

SPIRALLE

Šípek Christmas

Your eyes will not be able to stop looking at this Šípek creation, once you are drawn into the form and grace of a visual sensuality like the Spiralle champagne flute and ice decanter! With clean lines that curve and spiral throughout the SPIRALLE design, from base to the final contours at its top; both decanter and flute are masterpieces in glass that capture the delight of the moment when celebrating the good things of life!

Sparkling wine glass from pure crystal glass
height 29 cm, diam. 8 cm
Signed by Bořek Šípek

COLIBRI

Šípek Christmas



*A wine glass that gently bows
in innocence to the guilty
pleasures held within its form!*

*Colibri: with wings and a tipped
head, it's almost angelic almost
prayerful, but it's really just
a humming bird hovering,
hovering in your hand before
you can't resist the liquid
nectar within!*

Wine glass from pure crystal glass
height 29 cm, diam. 13 cm
Signed by Bořek Šípek

SHIGERU

Šípek Christmas

As a wine carafe this one has been designed as an ingenious spiky bulbous sphere that nevertheless stands proud "in-waiting" against gravity, patiently biding time as a modern intervention between tastings and pouring!

Presidents and Paupers, Princes and happy brides, singles and couples can all enjoy the artistry and science of the wine carafe – it is practical, it is necessary when celebrating, and this one is as unique as ever, just as spontaneous laughter can create a twinkle in one's eye!



Wine carafe from pure crystal glass
height 38 cm, diam. 22 cm; weight 2 kg
Signed by Bořek Šípek



www.boreksipek.com